

Z5156

**Q Flying adapter
Mounting instructions**

References in the manual

WARNING!

This refers to a potentially dangerous situation which may lead to personal injury.

CAUTION!

This refers to a potentially dangerous situation which may lead to damage to the equipment.

IMPORTANT!

This refers to a situation which may cause the equipment to malfunction.

Symbols on the equipment



Please refer to the information in the operating manual.

General Information

Mounting instructions
Z5156 Q Flying adapter

Version 1.0E, 10/2003, D2953.E.01

© by d&b audiotechnik AG 2003; all rights reserved.

The information contained in this manual has been carefully checked for accuracy, at the time of going to press, however no guarantee is given with respect to the correctness.

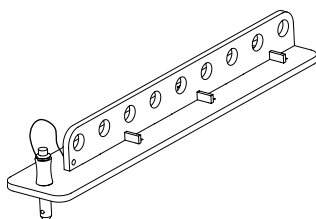
d&b audiotechnik AG accepts no responsibility for any errors or inaccuracies that may appear in this manual or the products and software described in it.

Technical specifications, dimensions, weights and properties do not represent guaranteed qualities.

As manufacturers we reserve the right to make alterations and modifications within the framework of legal provisions, as well as changes aimed at improving quality.

d&b audiotechnik AG
Eugen-Adolff-Strasse 134, D-71522 Backnang, Germany
Telephone +49-7191-9669-0, Fax +49-7191-95 00 00
E-mail: docadmin@dbaudio.com, Internet: www.dbaudio.com

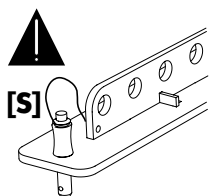
Z5156 Q Flying adapter



The Z5156 Q Flying adapter allows the horizontal suspension of either a single or arrays of up to a maximum of three Q cabinets. The Z5156 is connected to the quick lock adapter plate on the cabinet top panel of these cabinets and secured with the pin that is attached to it by a steel wire.

Safety instructions

WARNING!



CAUTION
LOCK PIN
SECURELY
BEFORE LIFTING
ONLY UNLOCK FOR
DISASSEMBLY ON
GROUND

Installation should only be carried out by fully trained personnel. There are certain rules for installation that must be complied with.

It is essential to secure the cabinet with the securing pin [S] before lifting the cabinet .

The adapter and loudspeaker must have all locking devices (securing pin [S]) secured when in use.

The securing pin [S] must only be unlocked for disassembly on the ground.

Secondary safeties must always be provided and used when flying or fixing loudspeaker loads overhead.

Load safety information

WARNING!

The Z5156 Q Flying adapter is designed to support up to three d&b Q1 or Q7 loudspeaker cabinets. The maximum permitted safe working load (SWL) for the adapter is 72 kg/159 lb and this value must on no account ever be exceeded.

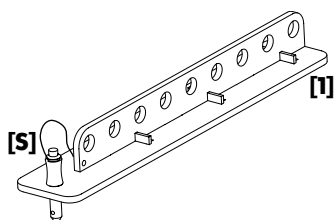
No additional loads must be added.

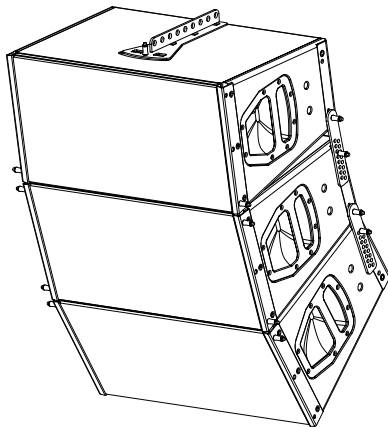
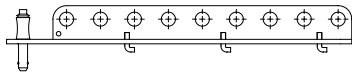
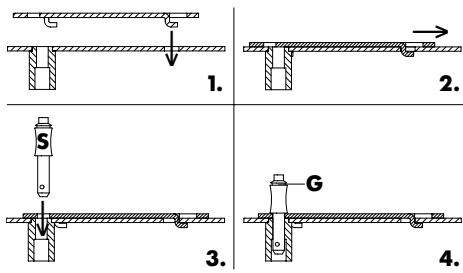
Part list Z5156 Q Flying adapter

- 1 x Z5156 Q Flying adapter [1] with securing pin [S] that is attached to the bracket by a steel wire.

Weight Z5156 Q Flying adapter

2.2 kg/4.9 lb





Array with three Q loudspeakers

Assembly

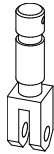
The Z5156 Q Flying adapter is connected to the quick lock adapter plate of the cabinet as shown in the graphic opposite:

1. Attach the adapter fixing plate into the recessed holes of the cabinets quick lock adapter plate.
2. Slide the adapter towards the front of the cabinet until it is fixed in place.
3. Insert the securing pin **[S]** into the respective recess.
4. Ensure that the securing pin **[S]** is locked. A groove **[G]** in the bolt of the securing pin indicates that it is properly locked.

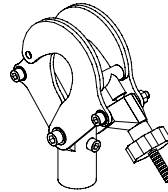
Operation

The Z5156 Q Flying adapter is equipped with nine locating holes (12 mm) at 30 mm spacings.

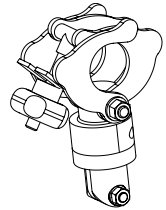
A single cabinet or arrays of up to a maximum of three Q cabinets can be suspended using an E6502 1t Shackle and steel wire ropes. Alternatively the Z5017 TV spigot HD together with the Z5016 Pipe clamp HD or the Z5147 MAN Rota clamp can be used.



**Z5017
TV spigot HD**



**Z5016
Pipe clamp HD**



**Z5147
MAN Rota clamp**

The vertical aiming of a single loudspeaker or the array depends on which of the adapter locating holes is used.