

Z5150

**Q Swivel bracket
Mounting instructions**

References in the manual

WARNING!

This refers to a potentially dangerous situation which may lead to personal injury.

CAUTION!

This refers to a potentially dangerous situation which may lead to damage to the equipment.

IMPORTANT!

This refers to a situation which may cause the equipment to malfunction.

Symbols on the equipment



Please refer to the information in the operating manual.

General Information

Mounting instructions
Z5150 Q Swivel bracket

Version 2.0E, 10/2003, D2952.E.02

© by d&b audiotechnik AG 2003; all rights reserved.

The information contained in this manual has been carefully checked for accuracy, at the time of going to press, however no guarantee is given with respect to the correctness.

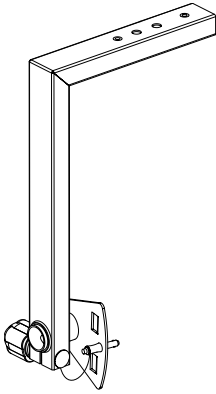
d&b audiotechnik AG accepts no responsibility for any errors or inaccuracies that may appear in this manual or the products and software described in it.

Technical specifications, dimensions, weights and properties do not represent guaranteed qualities.

As manufacturers we reserve the right to make alterations and modifications within the framework of legal provisions, as well as changes aimed at improving quality.

d&b audiotechnik AG
Eugen-Adolff-Strasse 134, D-71522 Backnang, Germany
Telephone +49-7191-9669-0, Fax +49-7191-95 00 00
E-mail: docadmin@dbaudio.com, Internet: www.dbaudio.com

Z5150 Q Swivel bracket



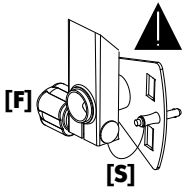
The L shaped Z5150 Q Swivel bracket allows a d&b Q7 loudspeaker cabinet to be mounted and set to a variety of horizontal or vertical angles.

Using the Z5024 Loudspeaker stand adapter together with the Q Swivel bracket enables a Q7 loudspeaker to be mounted onto a loudspeaker stand (e.g. Z5013, Z5009 or E6001) with a tube diameter of 35 mm/1.4".

The Z5150 Q Swivel bracket allows single Q7 cabinets to be flown vertically using the Z5010 TV spigot with fixing plate or the Z5029 TV spigot. Both can be used in conjunction with the Z5012 Pipe clamp for hanging cabinets from overhead bars or truss with a tube diameter between 32 mm to 50 mm (1.25" to 1.97").

Safety instructions

WARNING!



Installation should only be carried out by fully trained personnel. There are certain rules for installation that must be complied with.

It is essential to secure the cabinet with the securing pin [S] before lifting the cabinet or placing it onto a loudspeaker stand.

The bracket and loudspeaker must have all locking devices (fixing screw [F] and the securing pin [S]) secured when in use.

Under no circumstances should the securing pin [S] be unlocked to adjust the vertical angle of the cabinet.

Secondary safeties must always be provided and used when flying or fixing loudspeaker loads overhead.

Load safety information

WARNING!

The Z5150 Q Swivel bracket is designed to support one d&b Q7 loudspeaker cabinet.

No additional loads must be added.

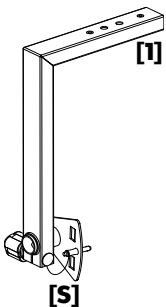
The bracket may only be used in an upright position or suspended vertically.

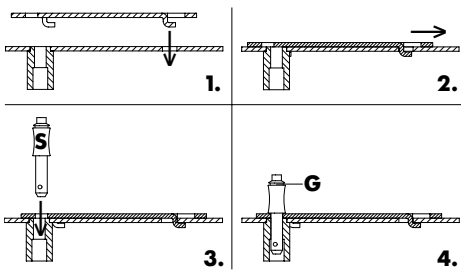
Part list Z5150 Q Swivel bracket

- 1 x Z5150 Q Swivel bracket [1] with securing pin [S] that is attached to the bracket by a steel wire.

Weight Z5150 Q Swivel bracket

2.5 kg/5.5 lb





Assembly

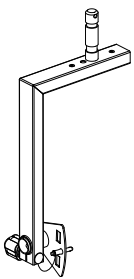
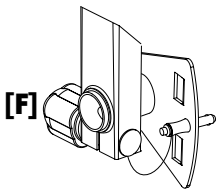
The Z5150 Q Swivel bracket is connected to the quick lock adapter plate of the cabinet as shown in the graphic opposite:

1. Attach the bracket fixing plate into the recessed holes of the cabinets quick lock adapter plate.
2. Slide the fixing plate towards the front of the cabinet until it is fixed in place.
3. Insert the securing pin **[S]** into the respective recess.
4. Ensure that the securing pin **[S]** is locked. A groove **[G]** in the bolt of the securing pin indicates that it is properly locked.

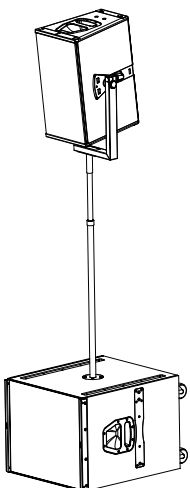
Operation

The centre of gravity of a Q7 loudspeaker is in line with the bracket's axis of rotation. This allows the vertical angle of the loudspeaker to be set as required without exerting any twisting forces on the mounting supports, an essential requirement for stable flying. The vertical angle of the loudspeaker is locked using the fixing screw **[F]**.

After slackening the fixing screw set the loudspeaker to the required vertical angle and retighten the fixing screw.



**Z5150 Q Swivel bracket with
Z5029 TV spigot**



**Q7 with
Z5150 Q Swivel bracket,
Z5024 Loudspeaker stand adapter,
Z5013 Loudspeaker stand winder M20
and Q-SUB**

Z5150 dimensions in mm [inch]

